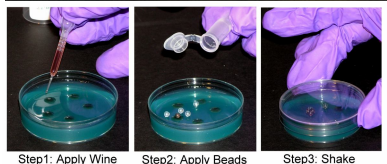
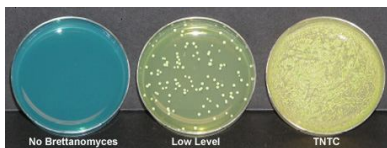


EZ Micro – do it yourself kit and instructions

1. Wine or juice is applied to a plate, pre-measured mixing beads are then applied, and the plate is shaken.
2. After a short incubation period, count colonies to determine concentration of cells in the starting sample.

EZ Tests for:



Brett EZ Sniff™



Z-Brett 24™

SAMPLE TYPE	<i>Brettanomyces</i>	Yeast, Mold & Bacteria	Bacteria & cycloheximide-resistant Yeast (including Brett)	Bacteria Only
WINE	1. EZ-Blue 2. EZ-Sniff 3. EZ Micro Pop Accessory Brett Products Brett Sens Brett XP	1. WL EZ		EZ BAD
GRAPES	4. EZ Berry 5. EZ 1-StepBerry			
Traditional Micro Tests				
WINE	6. Brett SD Agar 7. Brett SD Liquid	2. WL	WL Differential	
OAK	8. Brett Oak			
WINERY SURFACES	9. Brett Surface			
	4-Hour Antibody Test			
Wine or Colony Confirmation	10. Z-Brett 24			