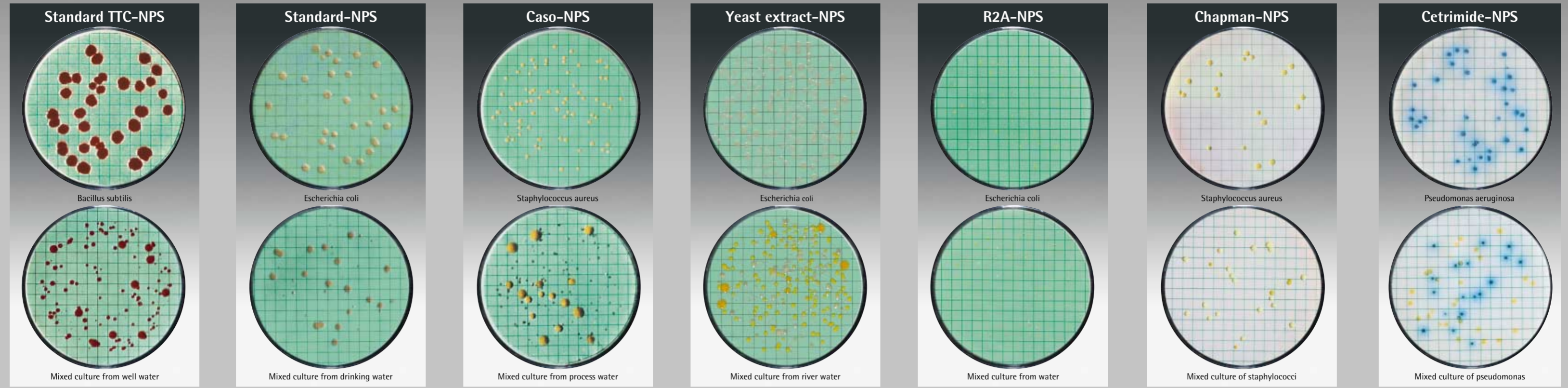




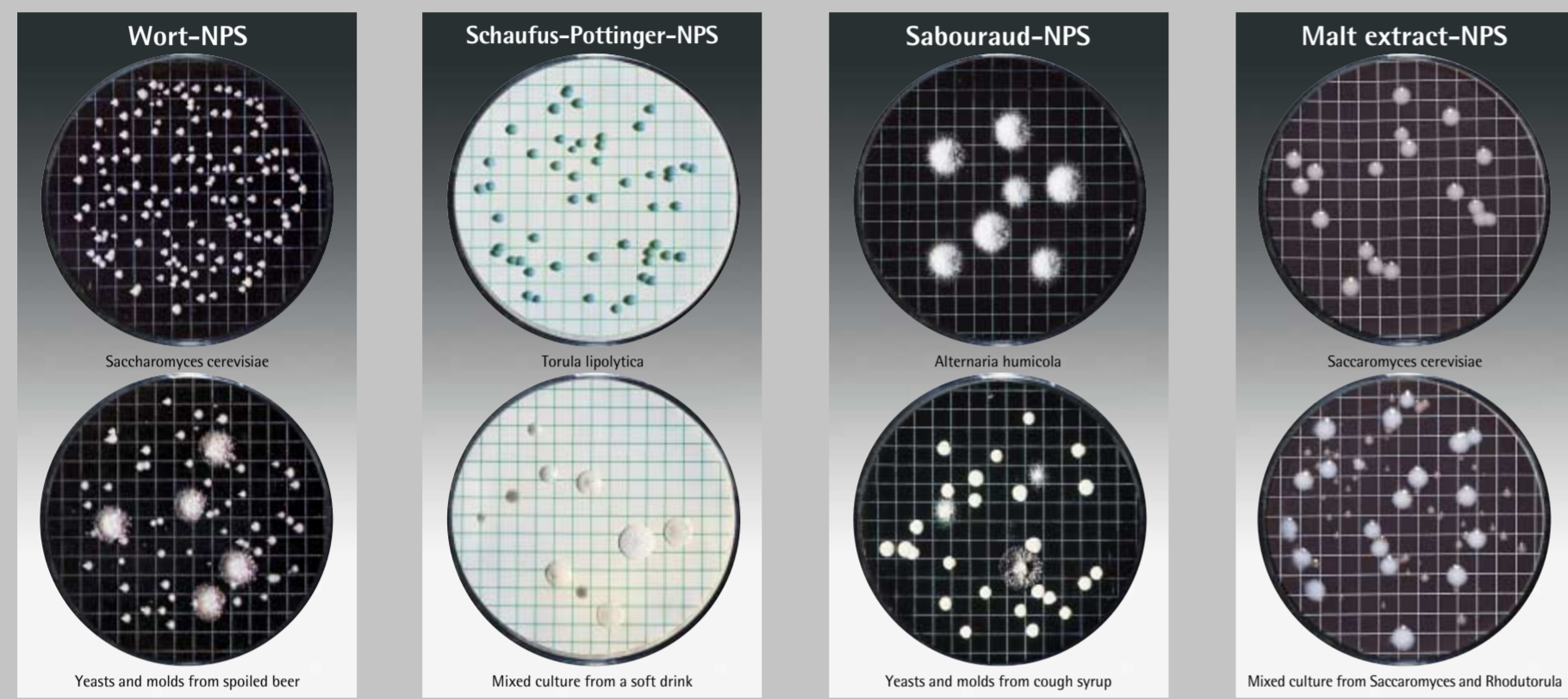
Nutrient Pad Sets

Total Count



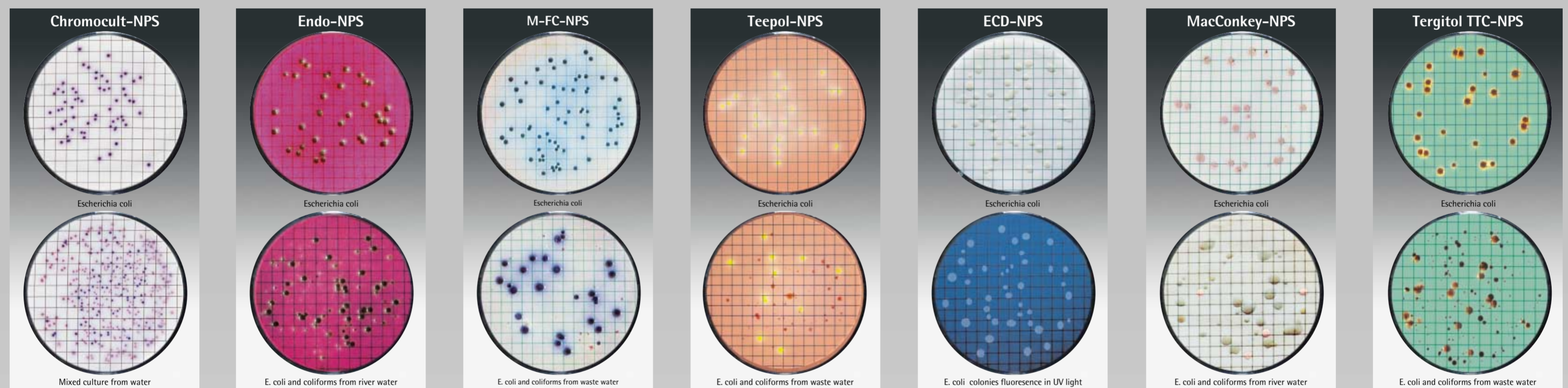
Non fecal bacteria

Yeast and molds

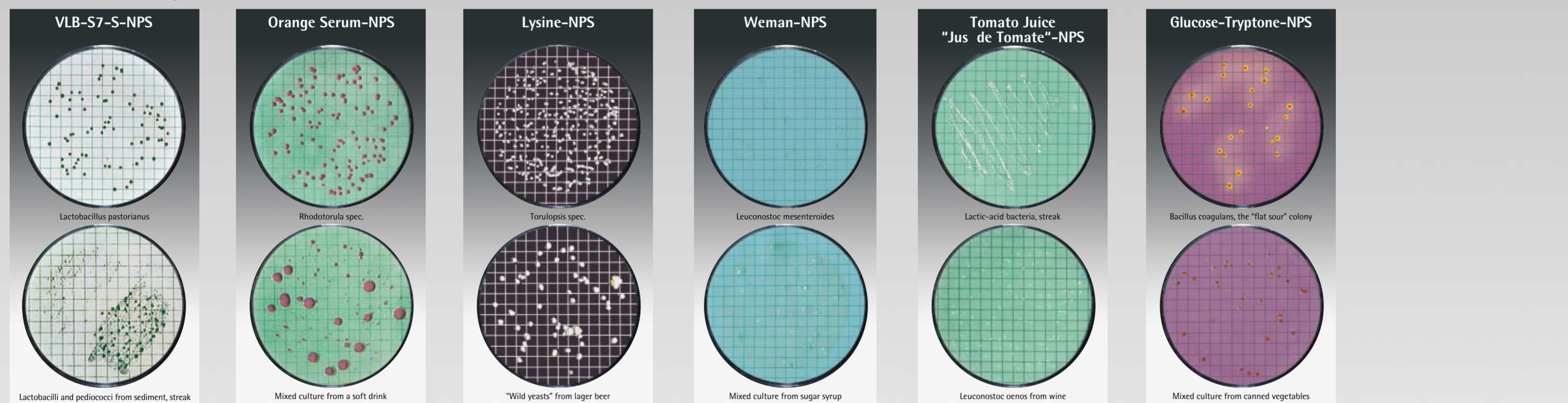


Fecal bacteria

E. coli & coliforms



Product Spoiling bacteria



Typical Application Examples

Product	Detection determination of	Nutrient pad type
Beer	Pediococci and lactobacilli	VLB-S7-S
	Wild yeasts	Lysine
	Yeasts and molds	Wort, Malt extract
Foods	Colony count	Standard TTC, Standard, Caso
	Enterobacteria	Endo, Teepol, M-FC, Tergitol TTC, ECD, MacConkey, Chromocult
	Mesophilic bacteria and thermophilic spore formers	Glucose-Tryptone
	Pseudomonas aeruginosa	Cetrimide
	Salmonellae	Bismuth-Sulfite
	Staphylococci	Chapman
	Streptococci	Azide
Yeasts and molds	Wort, Malt extract	

Product	Detection determination of	Nutrient pad type
Milk	E. coli and coliforms	Endo
	Salmonellae	Bismuth-Sulfite
	Streptococci	Azide
	Candida albicans	Sabouraud
Pharmaceuticals and cosmetics	Colony count	Caso, R2A
	Fecal streptococci	Azide
	Enterobacteria	MacConkey
	Pseudomonas aeruginosa	Cetrimide
	Staphylococcus aureus	Chapman
	Acid-tolerant microbes	Orange Serum
	Colony count	Standard, Standart TTC
Soft drinks	Lactic-acid bacteria	VLB-S7-S, Orange Serum
	Slime-forming bacteria (Leuconostoc)	Weman
	Yeasts and molds	Wort, Schaufus-Pottinger, Malt extract

Product	Detection determination of	Nutrient pad type
Sugar	Mesophilic bacteria and thermophilic spore formers	Glucose-Tryptone
	Slime-forming bacteria (Leuconostoc)	Weman
	Yeasts and molds	Wort, Schaufus-Pottinger, Malt extract
	Colony count	Standard TTC, Standard, R2A, Yeast extract
Water	E. coli and coliforms	Endo, Tergitol TTC, Teepol, M-FC, ECD
	Fecal streptococci	Azide
	Pseudomonas aeruginosa	Cetrimide
	Acetobacter	Wort, Orange serum, both wetted with 3%-5% ethanol
Wine	Lactic-acid bacteria	Orange Serum
	Lactic-acid bacteria (especially Leuconostoc oenos)	Tomato Juice "Jus de Tomate"
	Yeasts and molds	Wort, Schaufus-Pottinger, Malt extract